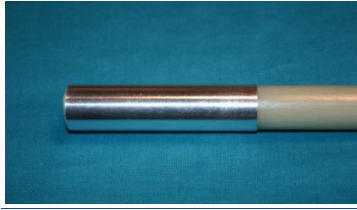


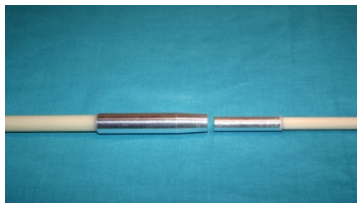
ASSEMBLY FOR MODEL #ST001 SWIMTETHER



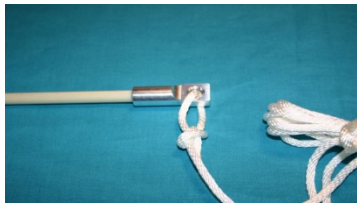
BOTTOM SECTION (INTO BASE PLATE)



BOTTOM ROD TO MID SECTION



MID SECTION TO TOP SECTION



TOP SECTION WITH NYLON CORD

1. Assembly of Model #ST001 takes less than 1 minute and you are in the water.
2. When placing belt around waist adjust “slide clip” so that there is some slack between your spine and where the “slide clip” is located, then latch buckle. Place “belt” so that it “rests” on the “forward” portion of your hips and “NOT” tight around the waist!
3. Proper assembly is: BOTTOM SECTION INTO BASE PLATE, MID SECTION INTO BOTTOM SECTION AND TOP SECTION INTO MID SECTION.....ASSEMBLY IS COMPLETE!

ENJOY YOUR SWIM

FOLLOW SAFETY PROCEDURES AT ALL TIMES

ASSEMBLY OF MODEL #AC005 SWIMTETHER MINI



PLACE UNIT INTO BASE PLATE



**ATTACH REVISED NEWLY
DESIGNED BELT AND MODEL #AC005 TO ENCLOSED
“BUNGEE CORD” BY THE USE OF “SPRING CLIPS”.**

1. Assembly of Model #AC005 takes less than 1 minute and you are in the water.
2. When placing belt around waist adjust “slide clip” so that there is some slack between your spine and where the “slide clip” is located, then latch buckle. Place “belt” so that it “rests” on the “forward” portion of your hips and “NOT” tight around the waist!
3. Proper assembly is: ATTACH BUNGEE TO BELT AND MODEL #AC005, INSERT INTO BASE PLATE.....ASSEMBLY IS COMPLETE!

ENJOY YOUR SWIM

FOLLOW SAFELY PROCEDURES AT ALL TIMES